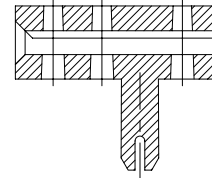
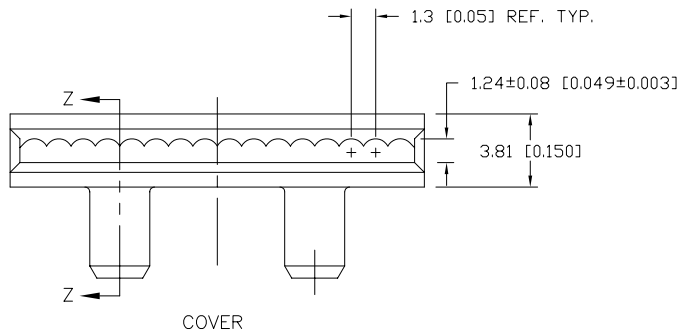
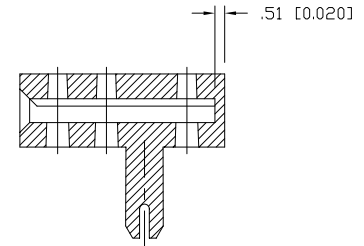


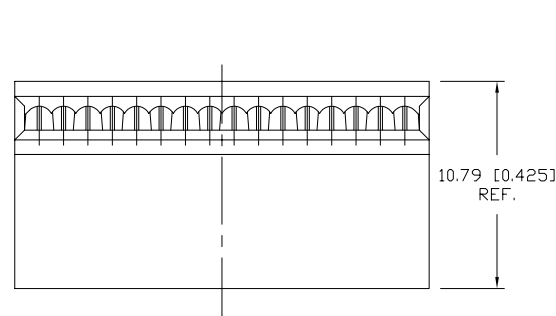
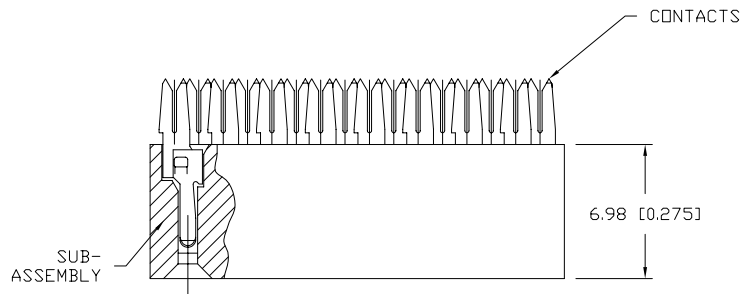
PRODUCT NUMBER
SEE TABLE



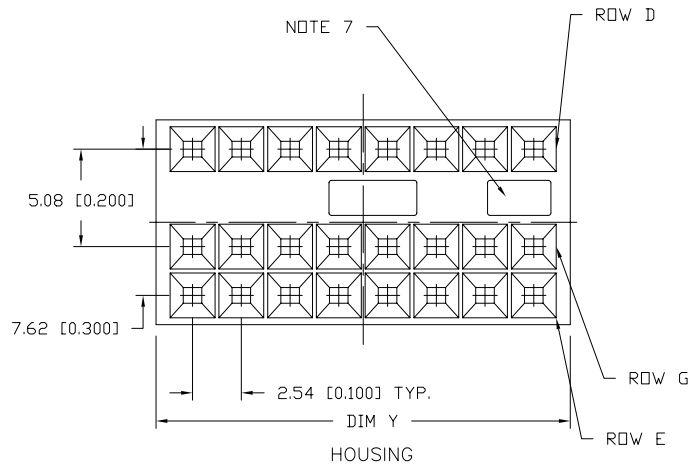
STYLE B
THRU SLOT
SECTION Z-Z



STYLE A
CLOSED
SECTION Z-Z



HOUSING AND COVER ASS'Y.



NOTE 7

| | | | | | | | | | |
|-------------|--|------------|--|---------------------|--|--|--|---|--|
| mat'l. code | | surface | | tolerance | | projection | | product family | |
| - | | ISO 1302 ✓ | | ISO 406 ISO 1101 | | | | QUICKIE | |
| ltr | | ecn no | | date | | tolerances unless otherwise specified | | title | |
| H | | REDRAW | | RDS 8/10/88 | | angles linear .XX±.01/.XX±.3 .XXX±.005/.XXX±.13 .XXXX±.0020/.XXX±.051 | | | |
| J | | CHANGES | | SAR 12/6/88 | | 0'±2' | | scale 1.5:1 | |
| K | | v90137 | | RGD 3/30/99 | | | | | |
| L | | N05-0080 | | MHT 7/27/05 | | dr D. SHEAFFER | | 8/10/88 | |
| M | | M06-0223 | | ERE 06/12/06 | | enr M. SMYK | | 8/10/88 | |
| | | | | | | chr M. SMYK | | 8/10/88 | |
| | | | | | | appd M. SMYK | | 8/10/88 | |
| sheet | | revision | | M | | M | | | |
| index | | sheet | | 1 | | 2 | | title FINAL ASS'Y QKE FEMALE I. C. | |
| | | | | | | | | dwg no 65350 | |
| | | | | | | | | sheet 1 of 2 size A3 | |
| | | | | | | | | type Product Customer Drawing | |

| PRODUCT NUMBER NOTE 8 | SIZE | LOADED ROWS | COVER STYLES | DIMENSION Y | SEE NOTE |
|--------------------------|-------|-------------|--------------|---------------|----------|
| 65350-001 | 2 x 7 | D AND E | A | 19.05 [0.750] | 2 |
| -002 | 2 x 8 | D AND E | A | 21.59 [0.850] | 2 |
| -003 | 2 x 7 | D AND G | A | 19.05 [0.750] | 2 |
| -004 | 2 x 8 | D AND G | A | 21.59 [0.850] | 2 |
| -005 | 2 x 7 | D AND E | B | 19.05 [0.750] | 2 |
| -006 | 2 x 8 | D AND E | B | 21.59 [0.850] | 2 |
| -007 | 2 x 7 | D AND G | B | 19.05 [0.750] | 2 |
| -008 | 2 x 8 | D AND G | B | 21.59 [0.850] | 2 |
| -011 | 2 x 7 | D AND G | A | 19.05 [0.750] | 6 |
| -012 | 2 x 8 | D AND G | A | 21.59 [0.850] | 6 |
| -013 | 2 x 7 | D AND E | B | 19.05 [0.750] | 6 |
| -014 | 2 x 8 | D AND E | B | 21.59 [0.850] | 6 |
| -015 | 2 x 7 | D AND G | B | 19.05 [0.750] | 6 |
| -016 | 2 x 8 | D AND G | B | 21.59 [0.850] | 6 |
| -017 | 2 x 7 | D AND E | A | 19.05 [0.750] | 6 |
| 65350-018 | 2 x 8 | D AND E | A | 21.59 [0.850] | 6 |

NOTES:

- CONTACT MAT'L: FULL HARD PHOSPHOR BRONZE.
- ② TERMINAL PLATING: 1.27u/50u" MIN. Ni UNDERPLATE OVER ENTIRE TERMINAL AND .76u/30u" MIN. Au IN DISCONNECT AREA ONLY.
- COVER MAT'L: 30% GLASS FILLED POLYESTER. FLAME RETARDANT PER UL 94V-0. COLOR: BLUE
- SUB-ASS'Y HOUSING MAT'L: 30% GLASS FILLED POLYESTER. FLAME RETARDANT PER UL 94V-0. COLOR: BLUE.
- APPLICATION DWG. TA-172 ILLUSTRATES ASSEMBLY DETAILS.
- ⑥ TERMINAL PLATING: 1.27u/ 50u" MIN. Ni UNDERPLATE OVER ENTIRE TERMINAL AND 1.27u/50u" MIN. Au IN DISCONNECT AREA ONLY. COLOR BLUE P/N 16-508-002
- ⑦ THIS FEATURE ON 2 x 8 SIZE ONLY.
- ⑧ ADD "LF" SUFFIX AT THE END OF PART NUMBER FOR LEAD FREE OPTION.
- THIS PRODUCT MEETS EUROPEAN UNION DIRECTIVES AND OTHER COUNTRY REGULATION AS DESCRIBED IN GS-22-008.
- THE PRODUCT IS NOT INTENDED TO BE EXPOSED TO A MANUFACTURING SOLDER PROCESS.

| | | | | | | | | | |
|-------------|--|------------|--|---------------------|--|---|--|---------------------------------|--|
| mat'l. code | | surface | | tolerance | | projection | | product family | |
| - | | ISO 1302 ✓ | | ISO 406 ISO 1101 | | ⊕ | | QUICKIE | |
| ltr | | ecn no dr | | date | | tolerances unless otherwise specified | | title | |
| M | | | | | | .XX±.01/.XX±.3 .XXX±.005/.XXX±.13 .XXXX±.0020/.XXX±.051 | | FINAL ASS'Y QKE FEMALE I. C. | |
| | | | | 0'±2' | | INCH/MM | | scale 1.5:1 | |
| | | | | dr | | D. SHEAFFER | | 8/10/88 | |
| | | | | enr | | M. SMYK | | 8/10/88 | |
| | | | | chr | | M. SMYK | | 8/10/88 | |
| | | | | appd | | M. SMYK | | 8/10/88 | |
| sheet | | revision | | | | | | FCI | |
| index | | sheet | | | | | | type Product Customer Drawing | |
| | | | | | | | | sheet 2 of 2 size | |
| | | | | | | | | 65350 A3 | |